

Samb. 07.12.2009

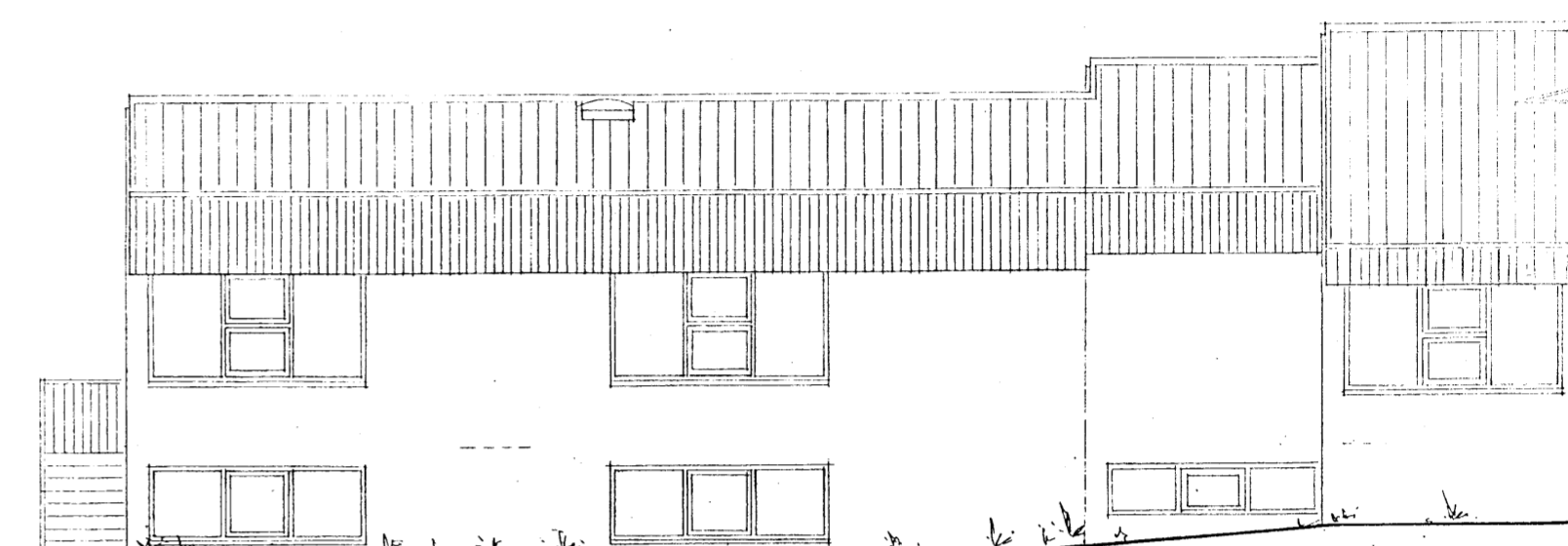
Hanna Einarsson



Nýr inngangur  
í fyrri áf.

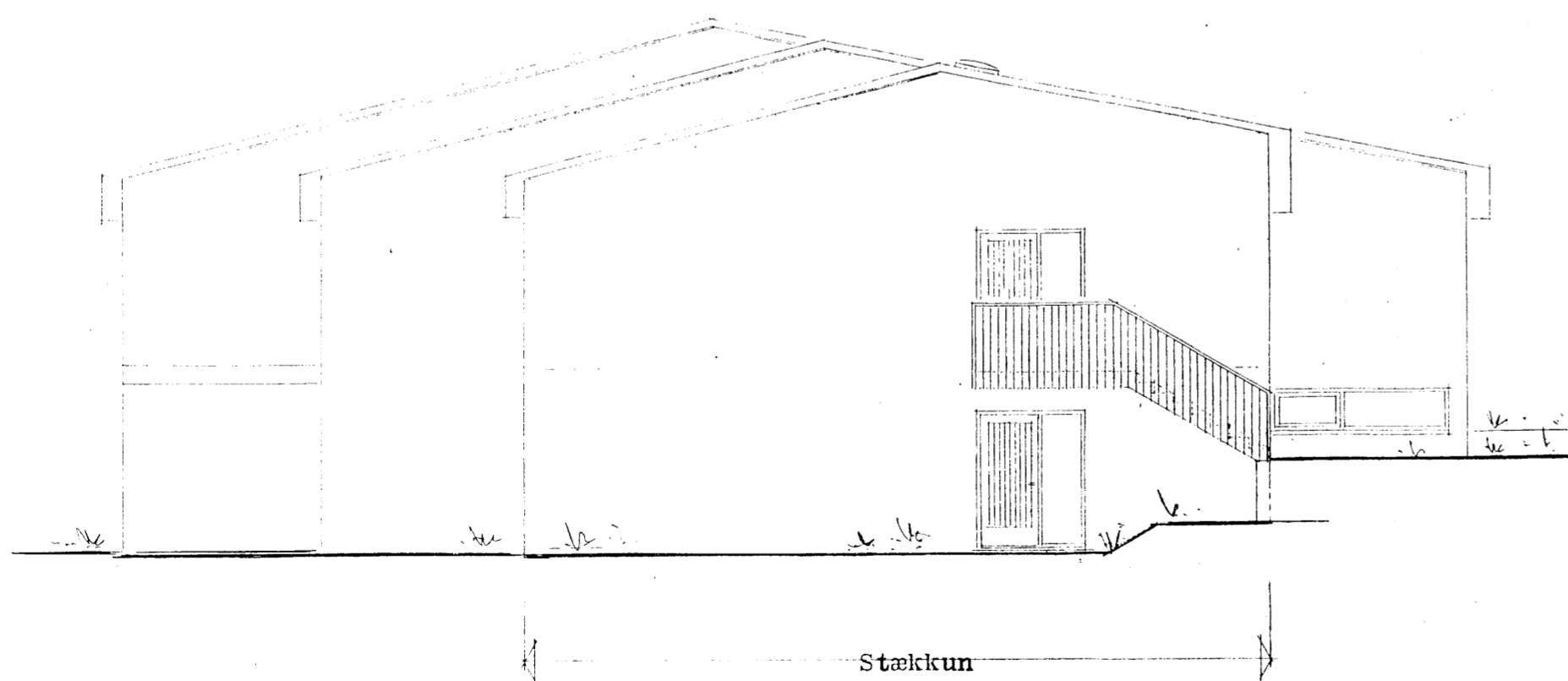
Stækkun

NORÐ-VESTURHLIÐ 1:100



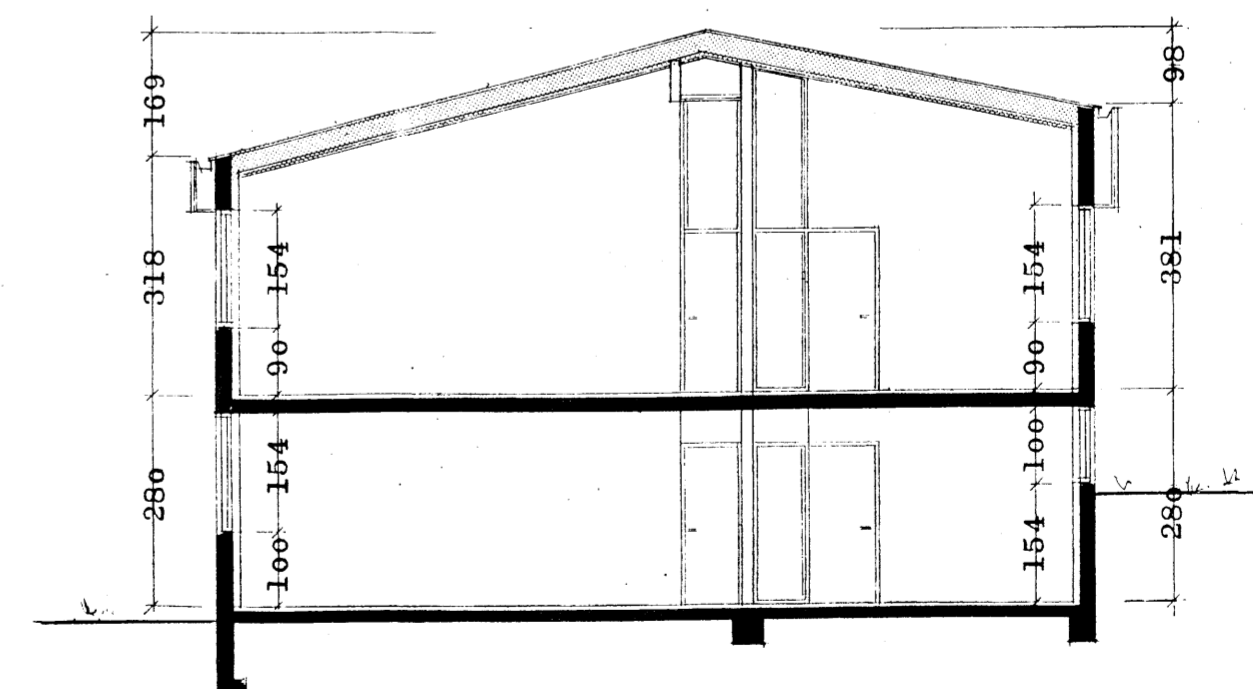
Stækkun

SUÐ-AUSTURHLIÐ 1:100



Stækkun

SUÐ-VESTURHLIÐ 1:100



SKURÐUR 1:100

26.  
11.  
04

GRUNNSKÓLI BLÁSKÓGABY  
REYKHOLTI, STÆKKUN 2.

MAGGI JÓNSSON AF  
Ásvallagötu 6 s. 5  
Reykjavík 30.10.2004  
Verkefni nr. 178 Teik