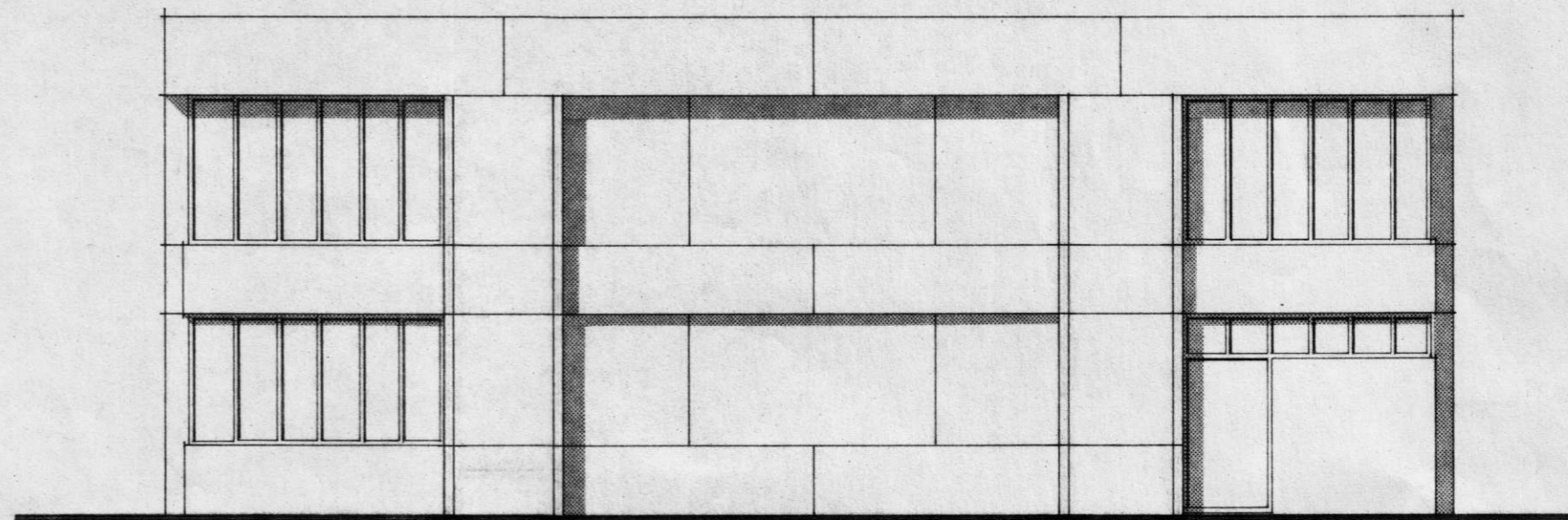
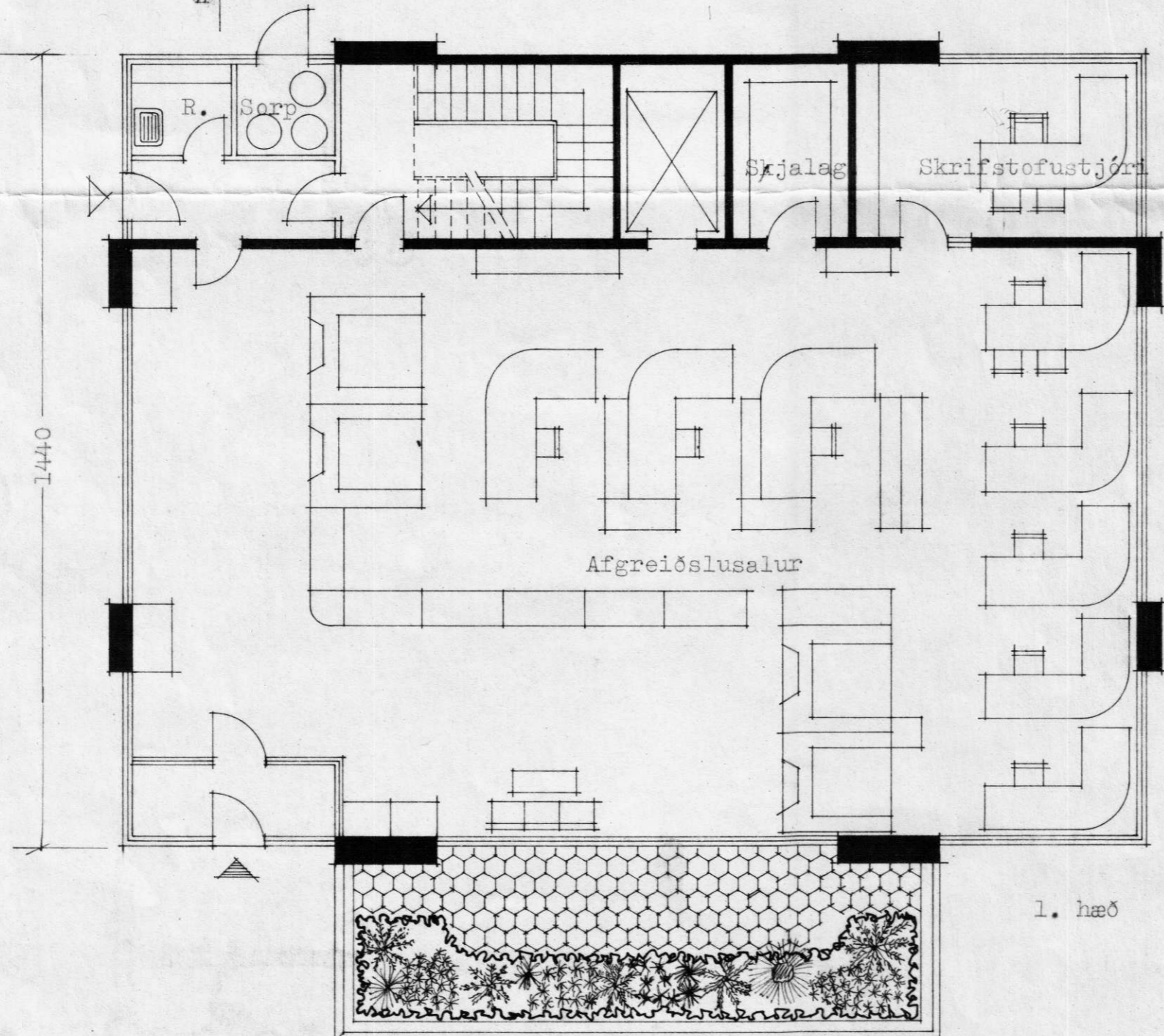


Suður

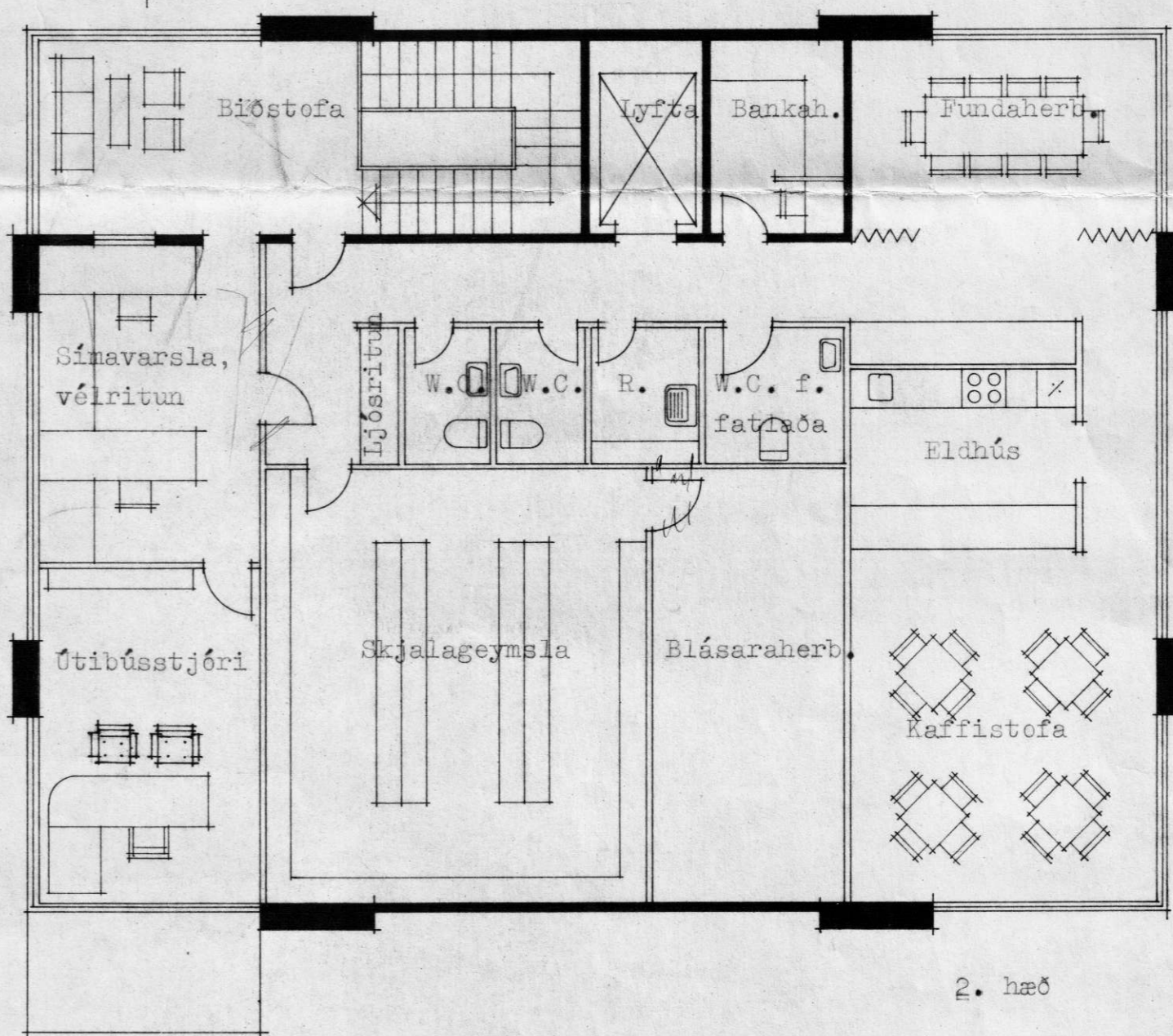


Norður

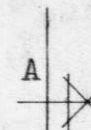
1800



1. hæð



2. hæð



1800

1. hæð + 2. hæð  
259.2 + 259.2 = 518.4 m<sup>2</sup>

<b>BÁRDUR DANÍELSSON</b> arkitekt og verkfræðingur Skipholti 51, Reykjavík, sími 84711			
Landsbankinn Hvolsvelli Tillöguuppr.	Kvarði	1:100	Teikn.
			Reikn.
	Bl.nr.	1	Af 2
	Breytt:		
Bárdur Daníelsson	Rvk.	maí 1987	