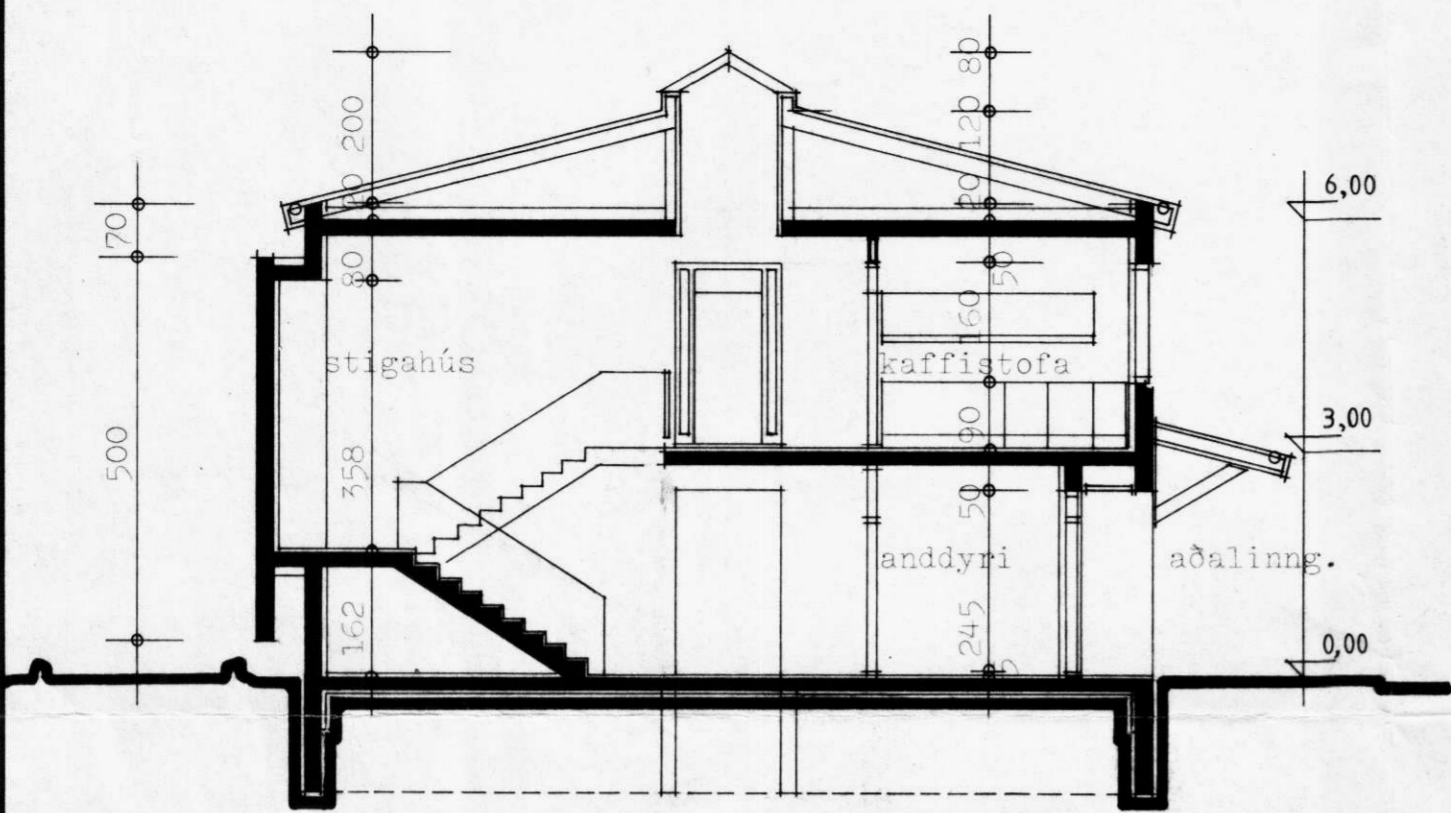
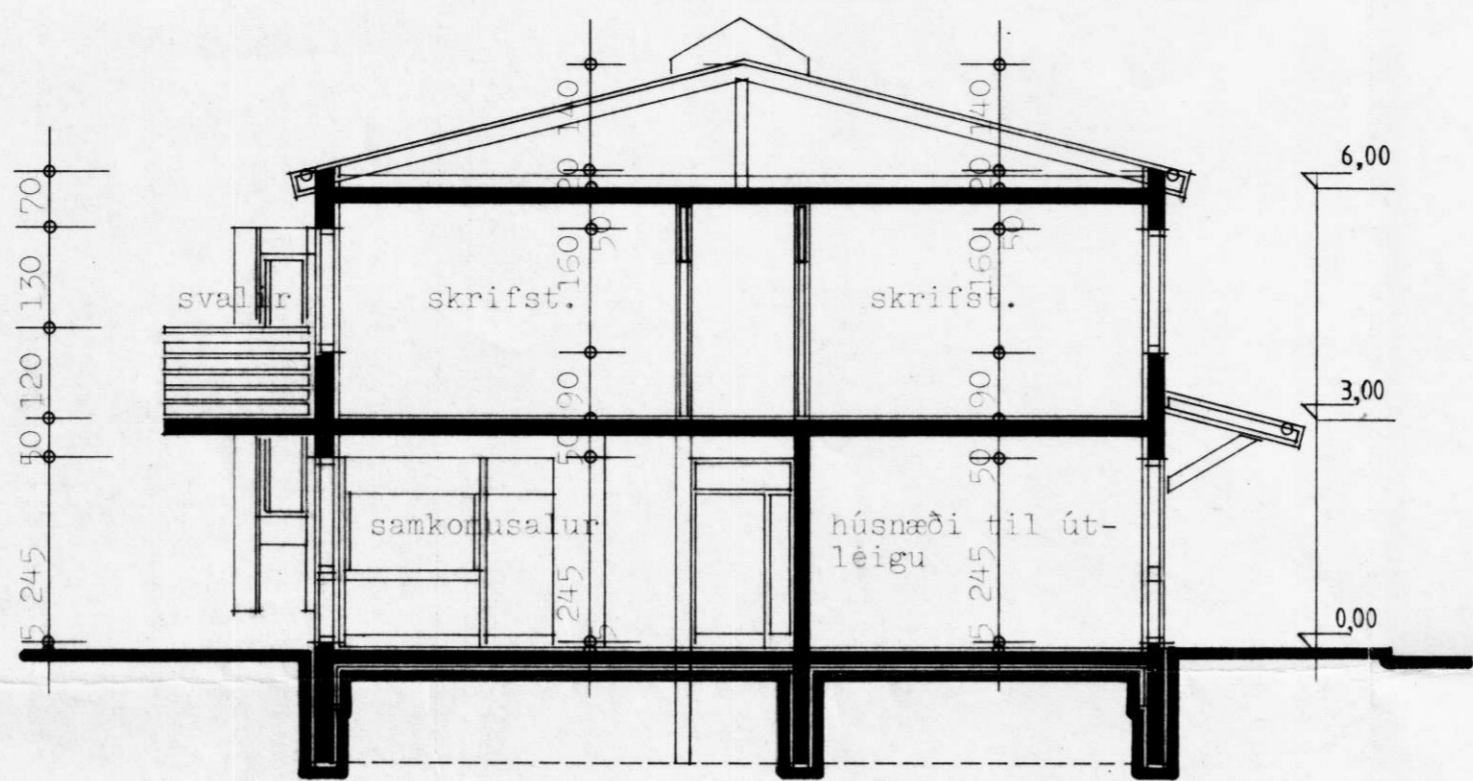


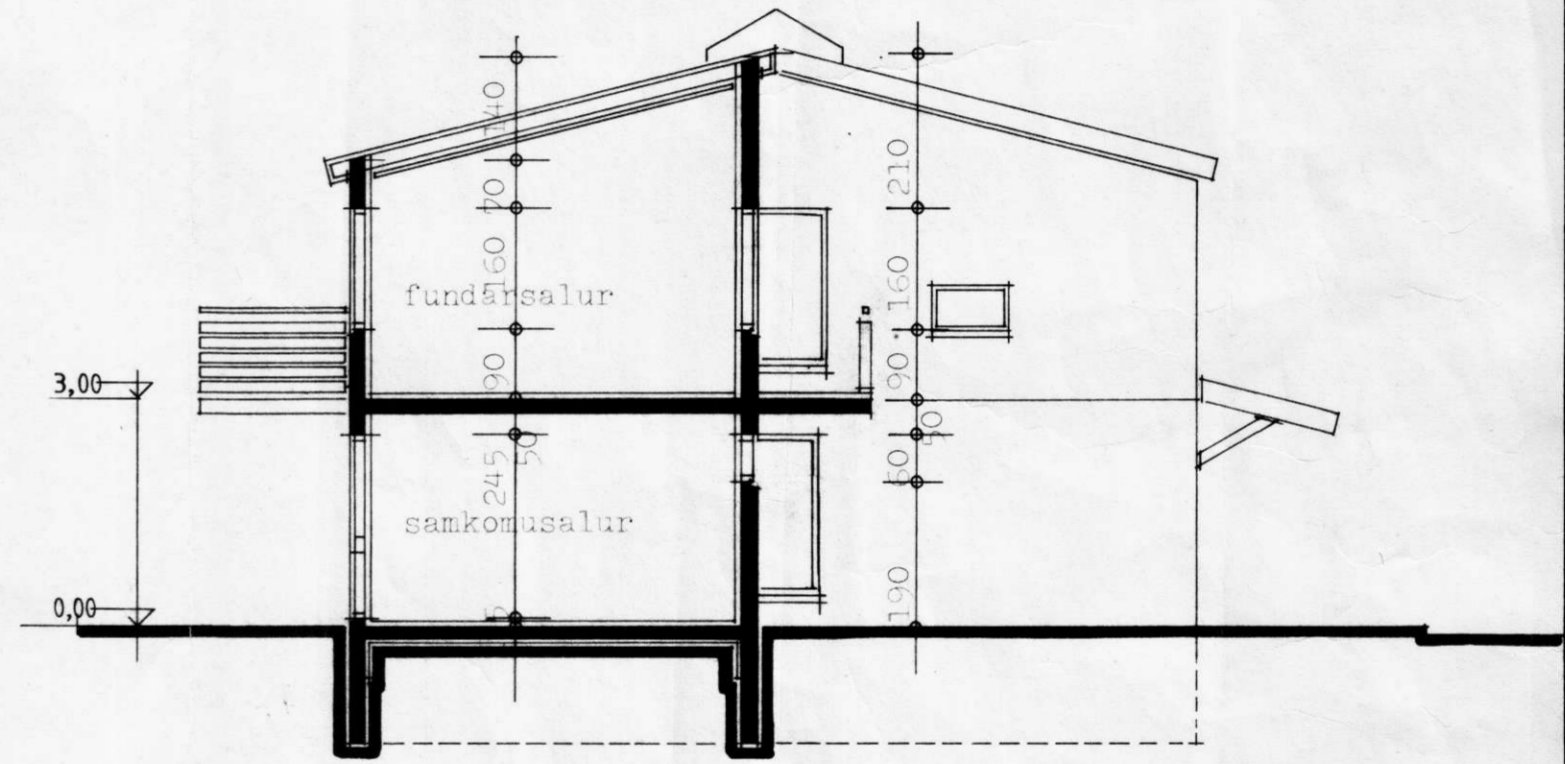
Sampykkt af bygginganeini  
 Hvolsvallar  
 12/1 1985  
 Anger Fuglason



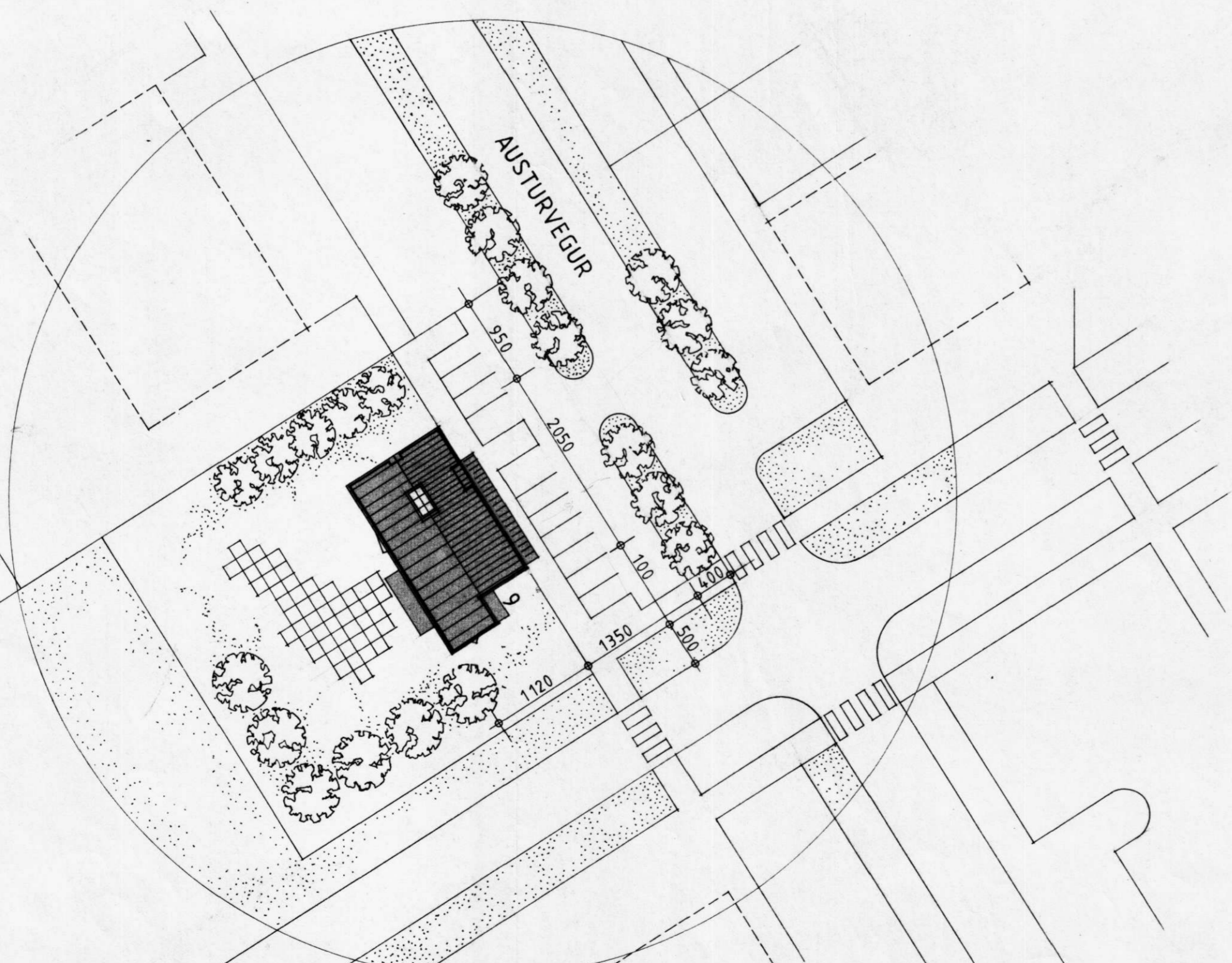
SNEIÐING A-A



SNEIÐING B-B



SNEIÐING C-C



AFSTÖÐUMYND M. 1:500

STÆRÐIR

Brúttóflatarmál 1. hæðar.....	209,0 m <sup>2</sup>
Brúttóflatarmál 2. hæðar.....	211,6 m <sup>2</sup>
Brúttóflatarmál húss.....	420,6 m <sup>2</sup>
Brúttórúmmál húss.....	1.427,5 m <sup>3</sup>

<b>TEIKNISTOFA</b>		HÚS FÉLAGS MALMIÐNÁÐARMANNA	
GYLFI GUÐJÓNSSON		Austurvegi 9 Hvolsvelli.	
ARKITEKT FAÍ DSA		VERK 84-218	
SKÓLAVÖRDUSTÍG 3, 101 REYKJAVÍK SÍMI 28740		BLAD	
		<b>103</b>	
HANNAD EY	TEIKNAD EY	REYKJAVÍK 1984-11-10.	<i>Anger Fuglason</i>
KVARDI 1:100	1:500	BREYTT	