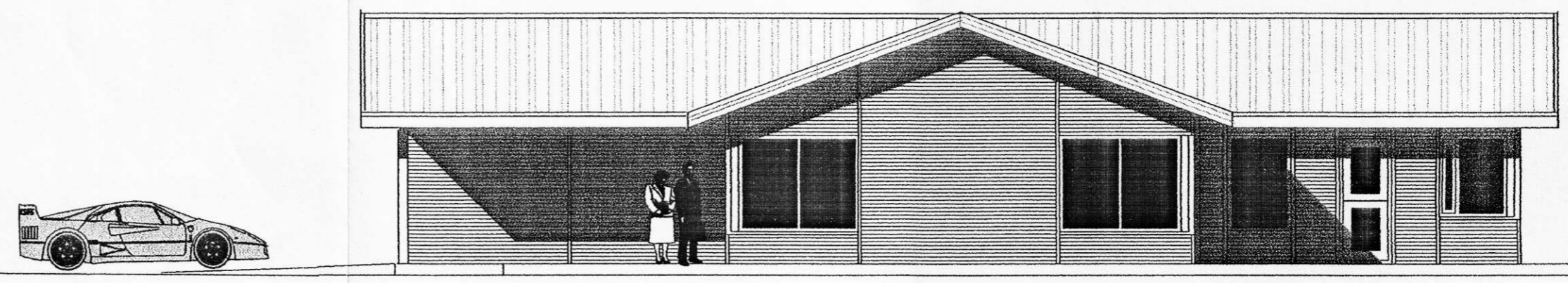
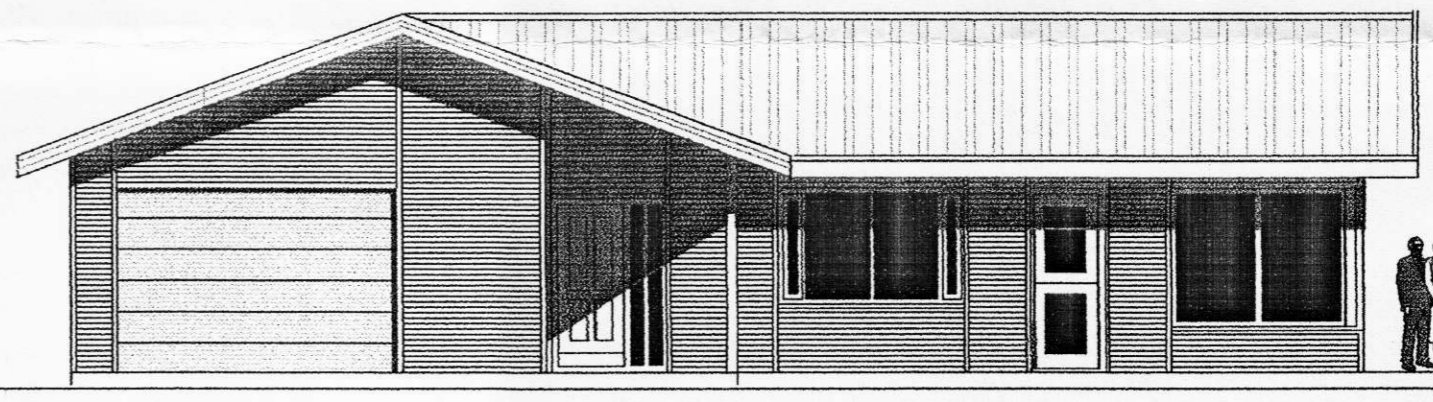


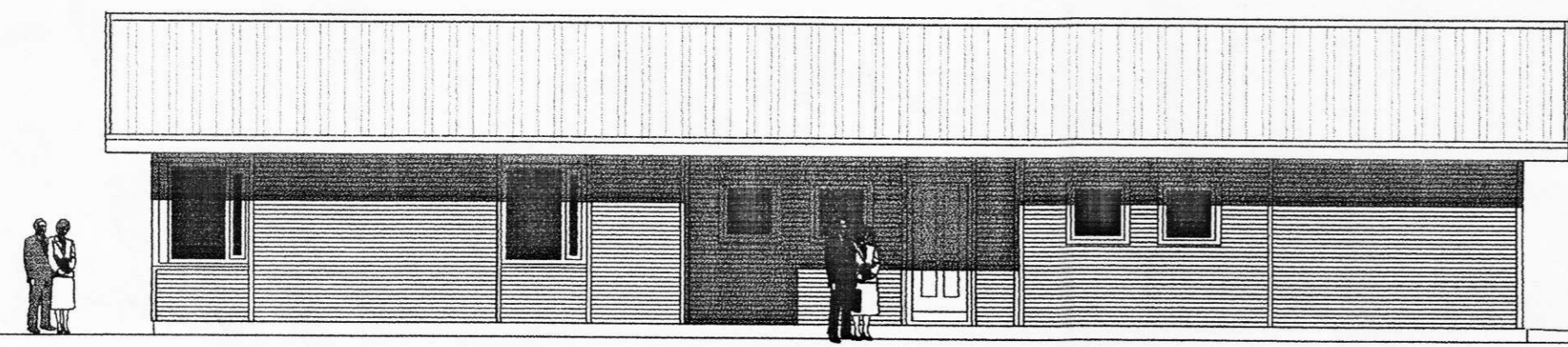
suð-austur



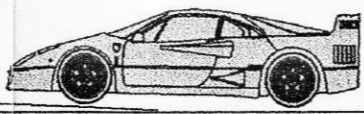
suð-vestur



norð-vestur



norð-austur



...þykkt af
...ingarnefnd
...anrepps.
dags. 4. júní 2003
[Signature]

**SAUÐHOLT I
Ásahreppi**

Íbúðarhús M: 1:100
Reykjavík 7. september 2003
Óli Jóhann Ásmundsson arkitekt
Kt. 180340-4679